

# PUBLIC HEALTH CONNECTION

## KCPHD Co-Hosts International Overdose Awareness Day 2016 Event

On August 31st, the Kittitas County Public Health Department (KCPHD) hosted an evening of remembrance in honor of International Overdose Awareness Day at the United Methodist Church.

International Overdose Awareness Day is held annually and aims to raise awareness about overdose and reduce the stigma around drug related deaths. The local event aimed to educate the public about the risks of overdose, what to do in case of an overdose, and offer a safe space for sharing and remembering loved ones lost to overdose.

Overdose prevention is an important part of KCPHD's work. KCPHD

provides naloxone and overdose prevention training along with the Never Share Syringe Exchange Program.

Naloxone is a prescription medication that can reverse a narcotic overdose. With increasing rates of heroin use in the U.S., narcotic overdose has become a significant public health concern.

KCPHD recommends that everyone at risk for experiencing or observing a narcotic overdose should have naloxone on hand in addition to training on how to successfully reverse an overdose.

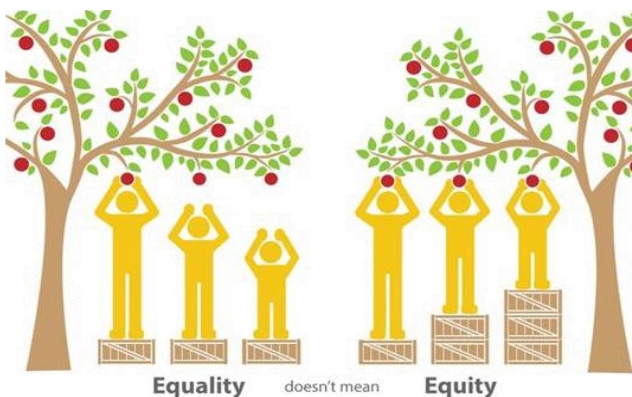
At the event, family members who have lost loved ones to overdose, expressed the importance of removing stigma around drug use. Most families did not know of the drug use. There was no opportunity to intervene.



## A Note from the Administrator: What Does Health Equity Mean?

Our vision is that all residents have the freedom and ability to pursue healthy lives in a healthy environment. But, we

know that not all residents have equitable access to health. We strive for health equity, but what does that mean?



Equality does not mean equity or, treating people the same. Sometimes, people need extra help to reach outcomes that others can easily reach.

We hear about disadvantaged populations of people - low income, low education level, lack of

access to healthy foods, lack of access to quality housing, etc. What health equity aims to do is remove barriers and help everyone "attain his or her full health potential" according to the Centers for Disease Control and Prevention (CDC).

"Health inequities are reflected in differences in length of life, quality of life, rates of disease, disability, death, disease severity, and access to treatment "(CDC).

Our vision is all about health equity. We want everyone to be as healthy as they possibly can be in Kittitas County.

**Department-Wide**

New Grants /Fund Sources	0
Active Volunteers	5
Health Data Requests	4
Quality Improvement Projects Completed	0
Media Contacts	35
Health Provider Releases	2
Community Engagements	78
Code/Policy Updates	7

**Vital Records**

Births Registered	90
Birth Certificates Issued	335
Deaths Registered	76
Death Certificates Issued	367

**Access to Baby and Child Dentistry**

Outreach Contacts	277
Referrals to Dentists	1

**Communicable Disease (CD)**

Tuberculosis Investigations	0
CD Investigations	27
Confirmed CD cases	9
Sexually Transmitted Diseases Reported	59
TB Tests Administered	42

**Immunization**

Total Vaccinations	196
Flu Vaccinations	21
Travel Vaccinations	32
Adults Receiving Vaccine	106
Children Receiving Vaccine	32
Travel Consultations	3

**HIV/AIDS and Hepatitis C**

HIV Tests	5
Hepatitis C Tests	4
Syringe Exchange Participants	125
Syringes Exchanged	2820
Education Participants	60

## New Universal Developmental Screening Tool at KCPHD

Ever wondered if your toddler’s tantrums are normal? I certainly have! “My 2-year-old used to bang his head on the floor when he was angry, and I was worried. He’s all grown up now, and I think he turned out all right,” asserts Liz Whitaker Community Health Services Supervisor. But parents often wonder: is this a normal phase that my child will grow out of? Is this something I should get help with?

KCPHD has a tool to answer these questions, the Social-Emotional Ages and Stages Questionnaires. The

questionnaires are for children from age one month to six years. Parents and caregivers who spend a lot of time with the child should be able to answer questions about things like how the child relates to both familiar people and strangers, how long it takes for them to calm down when upset, how well they sleep, and many more factors that give an overall picture of a child’s social and emotional development.

When the questionnaire is completed, the child is assigned a score that guides how to proceed. There are three

possibilities: social-emotional development appears to be on schedule, review behaviors of concern and monitor or further assessment with a professional may be needed.

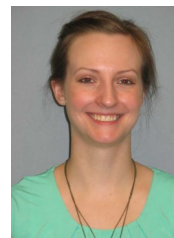
To find out more or to review the questionnaires, please contact KCPHD.

## KCPHD Hires New Environmental Health and Front Desk Staff

On July 25th, KCPHD hired Will Schwab, as the new Environmental Health Specialist Mr. Schwab will be working as a Food Inspector.



On August 15th, Katie Odiaga was hired as the new Public Health Technician and is the new face of the department’s front desk.



On September 12th, Rebecca Stratis was hired as a new part-time Environmental Health Specialist working in the on-site septic program.



## Policy Impact Update: Kittitas County has new Vaping Ordinance

On August 18th, the Kittitas County Board of Health and the Kittitas County Board of County Commissioners approved an ordinance to prohibit vaping in public places.

The intent of the policy is similar to the no smoking law from 2005, which is to limit secondhand exposure as well as to decrease the normalization of

these harmful products to our youth.

As of the 18th, vaping in public places is prohibited and complaints can be directed to KCPHD for violations.



# PUBLIC HEALTH CONNECTION

## Staff Inspect Food Vendors Over Fair Weekend

During the 2016 Fair/Rodeo weekend, KCPHD Environmental Health Specialists completed 57 total inspections in 3 days. Food vendors ranged from temporary booths to local caterers.

According to Melissa Schumaier, Environmental Health Specialist II, “this year’s inspections were the most challenging in ten years.” According to KCPHD staff, there were numerous unexpected violations ranging from bare hand contacting

ready to eat foods, storing food at room temperature, to improper hand washing.

With as many as 70,000 people coming to the fair, KCPHD understands the importance of ensuring fair food is safe.

KCPHD will be looking at ways to decrease the number of food code violations .

Ideas for next year include decreasing inspections for low risk vendors and increasing the number of inspections for higher risk vendors, who may be serving full menus as well as working with raw meat.

No reports of foodborne illnesses were received.



## KCPHD Presents at Water Law in Washington Conference

On July 18th and 19th, Holly Myers and Robin Read presented at the Water Law in Washington Conference.

The 25th annual conference, held in Seattle, presented opportunities and challenges around water rights, case law, and how mitigation is working to offset impacts of new rural developments in the Yakima River Basin.

Done in conjunction with Tim Trohimovich from Futurewise, the presentation, “Providing Water for Growth

Through Mitigation: Implementation of the Kittitas Settlement, focused on an overview of the settlement agreement, interim water regulations, leased water mitigation, and the Kittitas

County Water Bank.

The feedback from the presentation was positive, with the majority of the ratings as excellent or good regarding the presentation provided.



### Environmental Health (EH)

EH Complaints	40
---------------	----

### Living Environment

#### *Schools*

Building Inspections	0
----------------------	---

#### *Public Pools & Spas*

Permits Issued	9
----------------	---

Inspections	29
-------------	----

#### *Camps & Parks*

Permits Issued	5
----------------	---

Inspections	5
-------------	---

### Solid Waste

Permits Issued	1
----------------	---

Inspections	15
-------------	----

### On-Site Sewage

Installation Permits Issued	62
-----------------------------	----

Finalized Permits	52
-------------------	----

Site Evaluations	62
------------------	----

Inspections	47
-------------	----

### Food Safety

#### *Permits*

Permanent Food Establishment Applications	102
---	-----

Temporary Food Establishment Applications	48
---	----

Food Handler’s Permits	826
------------------------	-----

#### *Inspections*

Establishment Inspections	155
---------------------------	-----

Temporary Event Inspections	70
-----------------------------	----

### Drinking Water

Group A Water System Sanitary Surveys	7
---------------------------------------	---

Group B Water System Inspections	0
----------------------------------	---

Individual Well Site Application Reviews	15
--	----

Adequate Water Supply Determination Applications	64
--	----

Well Delegation Inspections	7
-----------------------------	---



? Did you know ?

- Greywater is wastewater from bathtubs, showers, sinks, washing machines, dishwashers, and sinks.
- Greywater does not include wastewater that has been contaminated with fecal material, which is designated as blackwater.
- According to Washington State Department of Health, greywater can contain chemicals, bacteria, and viruses.
- Greywater makes up the largest portion of wastewater from your home with up to 40 gallons per person each day.
- Greywater can be used for subsurface irrigation in Washington State, but must follow Washington Administrative Code 246-274.
- Recycled greywater is never safe to drink.

## Board of Health Approves Emergency Operation Plan

On July 13th, the Kittitas County Board of Health approved a resolution to adopt KCPHD's Emergency Operation Plan (EOP).

The most recent updates to the EOP are to ensure KCPHD addresses public health accreditation standards.

For example, there are numerous standards that address the investigation of health problems and hazards in order to protect the community.

The 2016 version of the EOP is 102 pages long with a basic plan and additional annexes to

address specific issues ranging from laboratory procedures to pandemic flu response.

The Board of Health plays a key role in emergencies, acting as the consulting board with the Health Officer to decide policy and develop public health priorities.

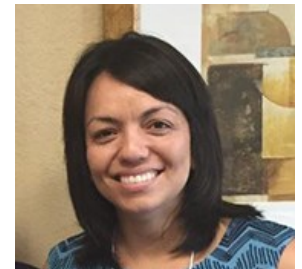
## BOHAC Welcomes New Member

On August 8th, the Kittitas County Board of Health Advisory Committee motioned to approve the membership of Guadalupe Huitron.

Ms. Huitron has over a decade of working in the public health field including a Master's in Public Health (MPH) and

international public health work.

Ms. Huitron graduated from Central Washington University with a Bachelor of Science and the University of North Carolina at Chapel Hill with an MPH as well as a Master of Social Work degree.



## KCPHD Continues Working Towards Accreditation

KCPHD is currently in the pre application stage of accreditation. The stages of accreditation are: pre application, application, document selection, site visit, accreditation decision, reports, and reaccreditation.

KCPHD has an accreditation team of employees from various departments. The team has reviewed all of the

standards and measures required of accreditation and is working to ensure the department meets standards.



The accreditation team has an ongoing work plan to address areas that have been identified as needing additional work.

The next step will be to submit an application, which is a formal notification to the Accreditation Board that KCPHD is committed to initiating the accreditation process.

